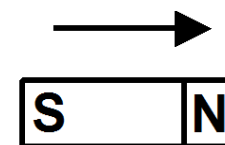
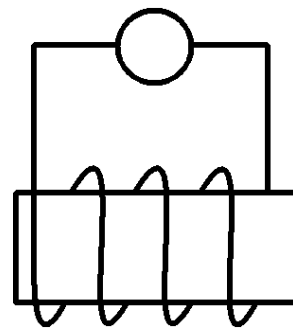
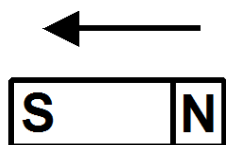
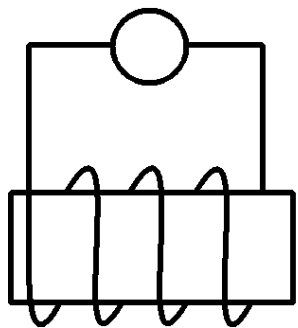
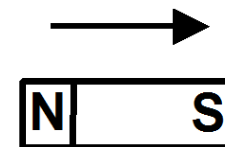
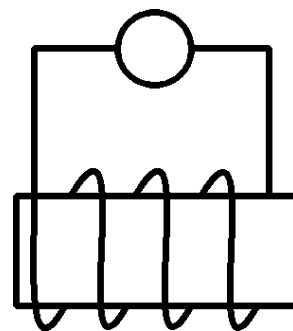
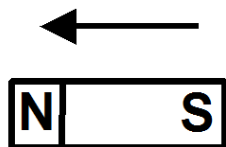
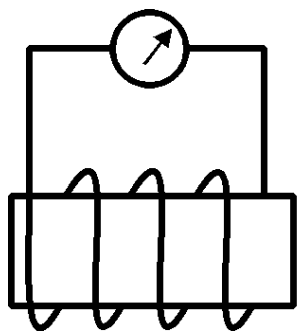
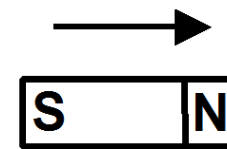
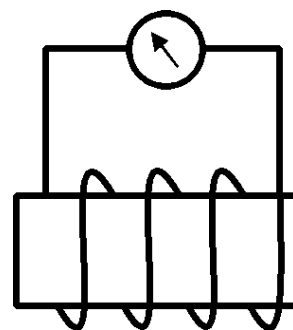
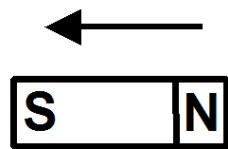
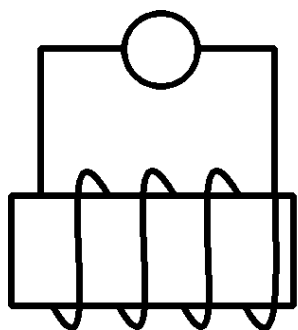
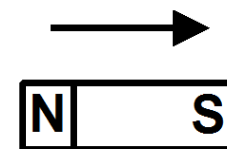
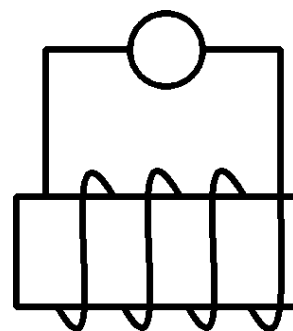
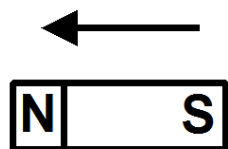
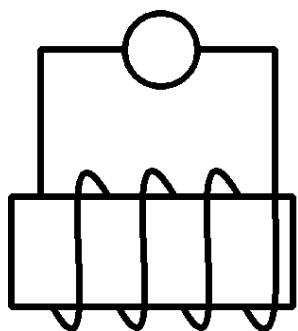


Elektromagnetická indukce domácí příprava

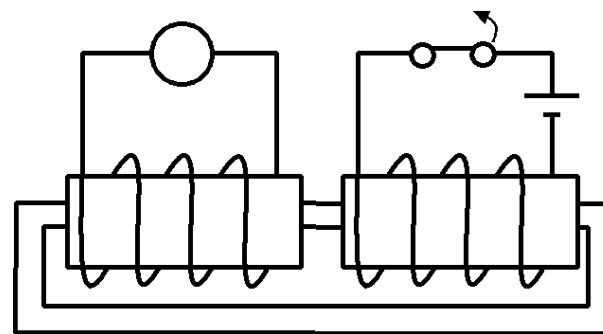
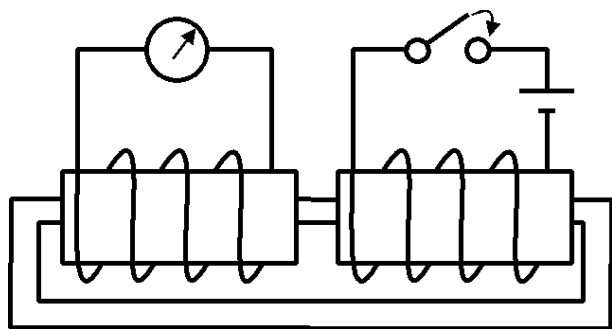
1. Doplň na jednotlivých obrázcích magnetické pole cívky, směr proudu v závitech cívky a vychýlení ručičky přístroje.



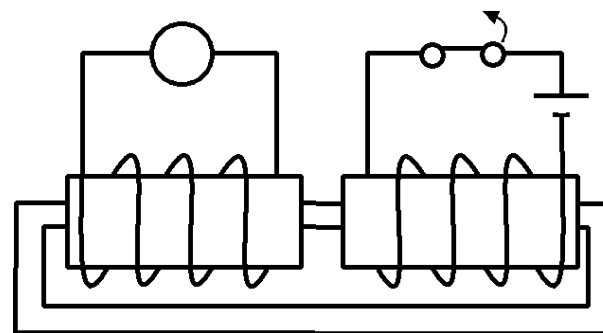
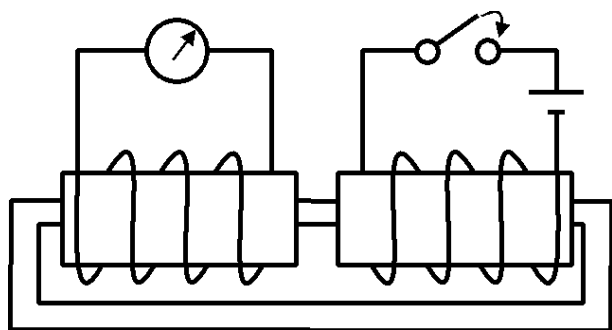
2. Doplň na jednotlivých obrázcích magnetické pole cívky, směr proudu v závitech cívky a vychýlení ručičky přístroje.



3. Doplň na jednotlivých obrázcích magnetické pole cívek, směr proudu v závitech cívky a vychýlení ručičky přístroje.



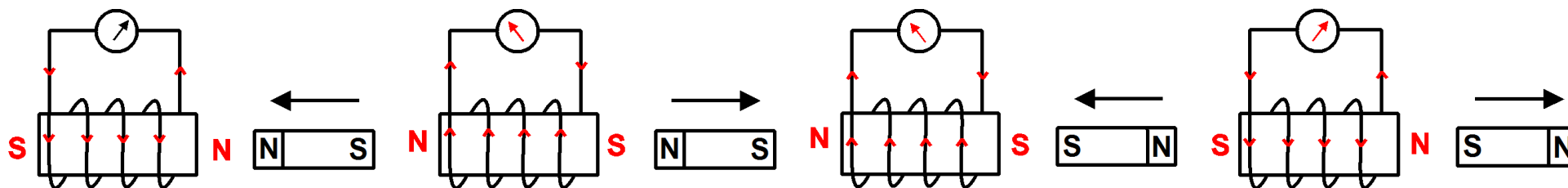
4. Doplň na jednotlivých obrázcích magnetické pole cívek, směr proudu v závitech cívky a vychýlení ručičky přístroje.



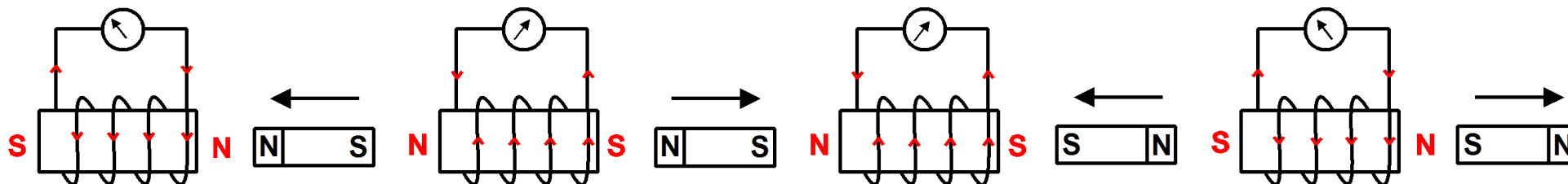
Elektromagnetická indukce domácí příprava

Výsledky

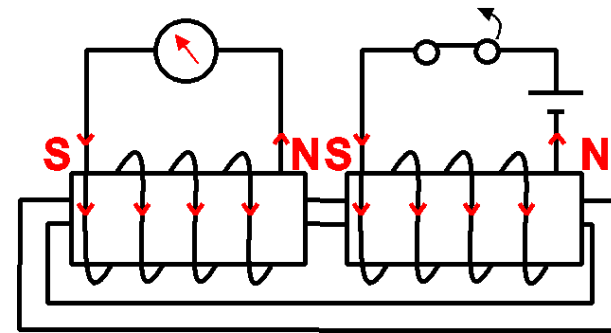
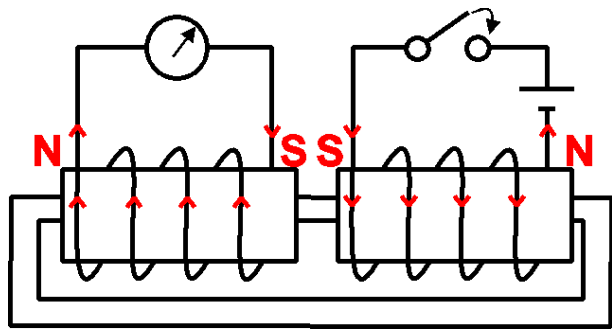
1.



2.



3.



4.

